

1



2a



2b



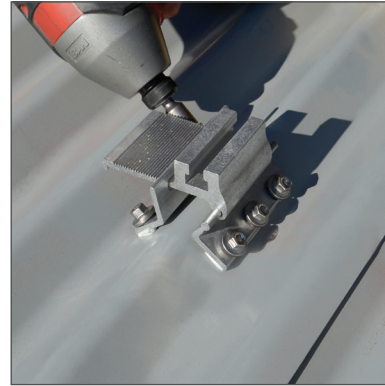
3



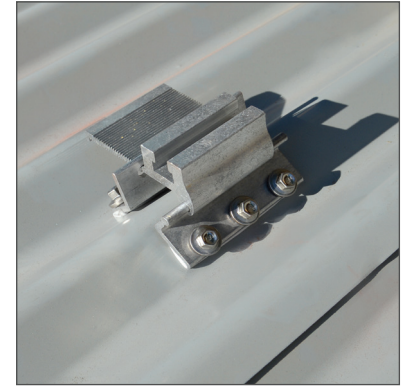
4a



4b



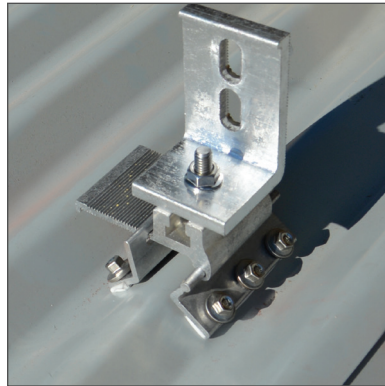
4c



5



6



7

1. Clean roof area that will come in contact with CorruSlide bracket. Determine location of first tier of brackets and snap chalk line for alignment. Remove release paper from tape on the CorruSlide-Flipper (hinged component with three fastener holes).
2. a-b. Install screws through the CorruSlide-Flipper into the roof panel.
3. Tilt the CorruSlide-Slide ("T" Slotted component) upward and slide into place over the CorruSlide-Flipper that was installed in step 2a-2b.
4.
 - a. Remove release paper from tape on the CorruSlide-Slot Bracket
 - b. Slide the CorruSlide-Slot Bracket (this part has a long rectangular hole and two fastener holes) over the serrated leg of the CorruSlide-Slide from step 3. It is important to adjust the CorruSlide-Slot Bracket such that the CorruSlide-Slide of step 3 is level and locked in place. Note that depending upon the roof profile it may be necessary to skip a ridge/valley.
 - c. Install Screws in CorruSlide-Slot Bracket component.
5. Installed CorruSlide bracket.
6. Slide the 5/16" diameter bolt (provided with each CorruSlide) into the CorruSlide-Slide.
7. Attach the desired rail attachment bracket (may be provided by other manufacturer).

*Note- It is recommended that the installer assemble and check one complete CorruSlide assembly on the roof panel for fit prior to removing release paper or installing screws. This will provide an indication of approximate fit *